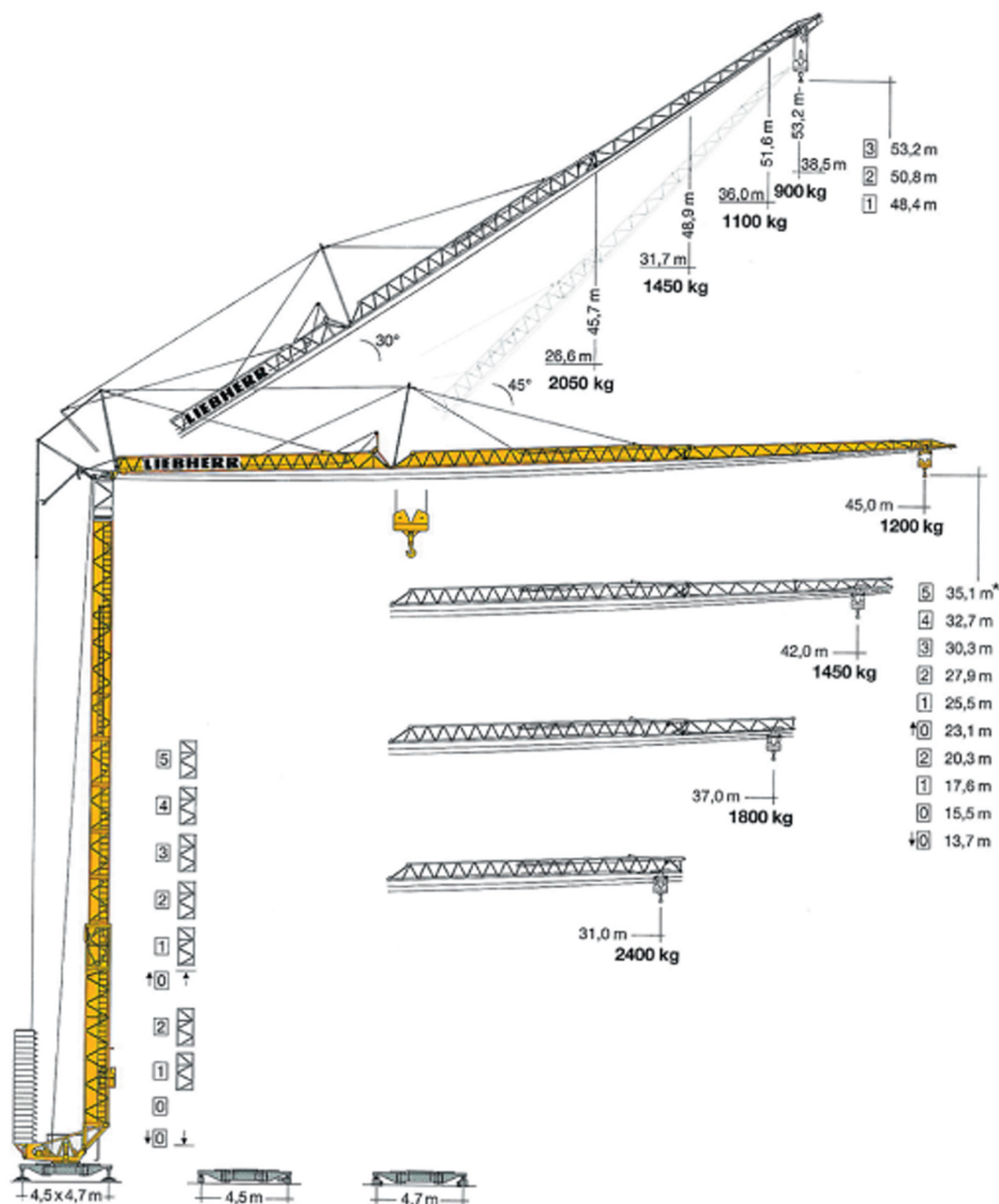

















Věžový jeřáb 71 K

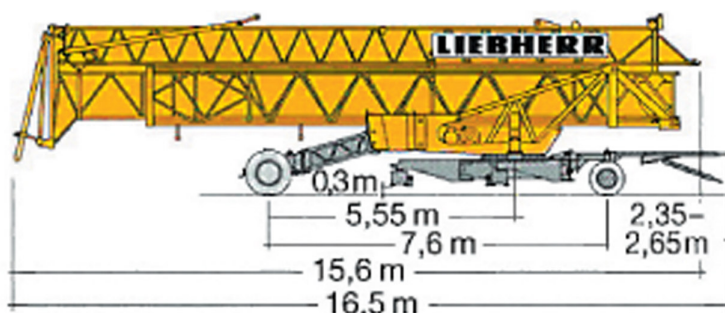
LIEBHERR



délka výložníku m	m/kg		Vodorovný výložník 2-závěs 2,9/3,5 m																							
			18,0	20,0	22,0	24,0	26,0	28,0	29,0	30,0	31,0	32,0	33,0	34,0	35,0	36,0	37,0	38,0	39,0	40,0	41,0	42,0	43,0	44,0	45,0	
45,0	3,3 - 20,3 3050		3050	3050	2790	2530	2310	2120	2040	1960	1890	1820	1750	1690	1630	1580	1530	1480	1430	1390	1350	1310	1270	1240	1200	
42,0	3,3 - 22,1 3050		3050	3050	3050	2780	2540	2340	2240	2160	2080	2000	1930	1870	1800	1750	1690	1640	1580	1540	1490	1450				
37,0	3,3 - 23,3 3050		3050	3050	3050	2950	2700	2480	2390	2290	2210	2130	2060	1990	1920	1860	1800									
31,0	3,3 - 25,0 3050		3050	3050	3050	3050	2920	2690	2590	2490	2400															

m	m/kg		Vodorovný výložník 2+4 závěs 2,9/3,5 m																							
			10,0	11,0	12,0	13,0	14,0	16,0	18,0	20,0	22,0	24,0	26,0	28,0	30,0	31,0	33,0	35,0	37,0	39,0	41,0	42,0	43,0	44,0	45,0	
45,0	3,3 - 20,0 3000		6000	5810	5290	4850	4470	3860	3390	3000	2690	2430	2210	2030	1860	1790	1650	1540	1430	1330	1250	1210	1170	1140	1100	
42,0	3,3 - 21,7 3000		6000	6000	5780	5310	4900	4230	3710	3300	2960	2680	2440	2240	2060	1960	1830	1710	1580	1490	1390	1350				
37,0	3,3 - 22,9 3000		6000	6000	6000	5620	5190	4490	3940	3510	3150	2850	2600	2380	2200	2110	1960	1820	1700							
31,0	3,3 - 24,7 3000		6000	6000	6000	6000	5610	4850	4270	3800	3410	3060	2820	2590	2390	2300										

délka výložníku m	m/kg		Šikmé postavení výložníku 30° 2,9/3,5 m																							
			14,0	15,0	16,0	18,0	20,0	22,0	24,0	25,0	26,0	26,6	28,0	30,0	31,0	31,7	33,0	34,0	35,0	36,0	37,0	38,0	38,5			
45,0	3,1 - 14,3 3000		3000	2970	2760	2400	2120	1890	1700	1610	1530	1490	1390	1270	1220	1180	1120	1070	1030	990	950	910	910	900		
42,0	3,1 - 15,4 3000		3000	3000	3000	2620	2310	2060	1850	1760	1680	1640	1530	1400	1340	1300	1230	1180	1140	1100						
37,0	3,1 - 16,9 3000		3000	3000	3000	2870	2540	2270	2050	1950	1860	1810	1690	1550	1490	1450										
31,0	3,1 - 18,9 3000		3000	3000	3000	3000	2860	2560	2310	2200	2100	2050														



ca. 19600 kg

Věžový jeřáb LIEBHERR 77 K
PŘÍKON A POLOMĚR OTÁČENÍ
Poloměr otáčení: r=2,4 m/36600 kg, r=2,9 m/36600 kg, r=3,5 m/29980 kg
Příkon: 21 kVA (kabel 4x6mm² o max. délce 87 m)
Jištění: 50 A motorový jistič